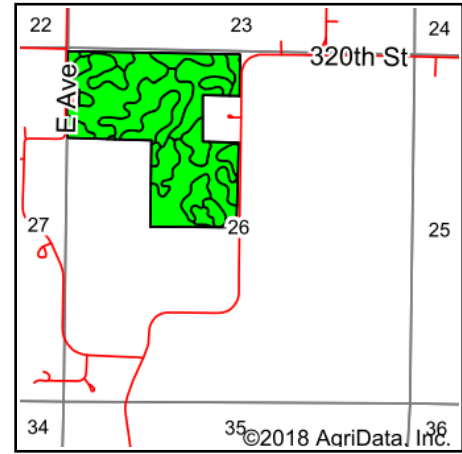
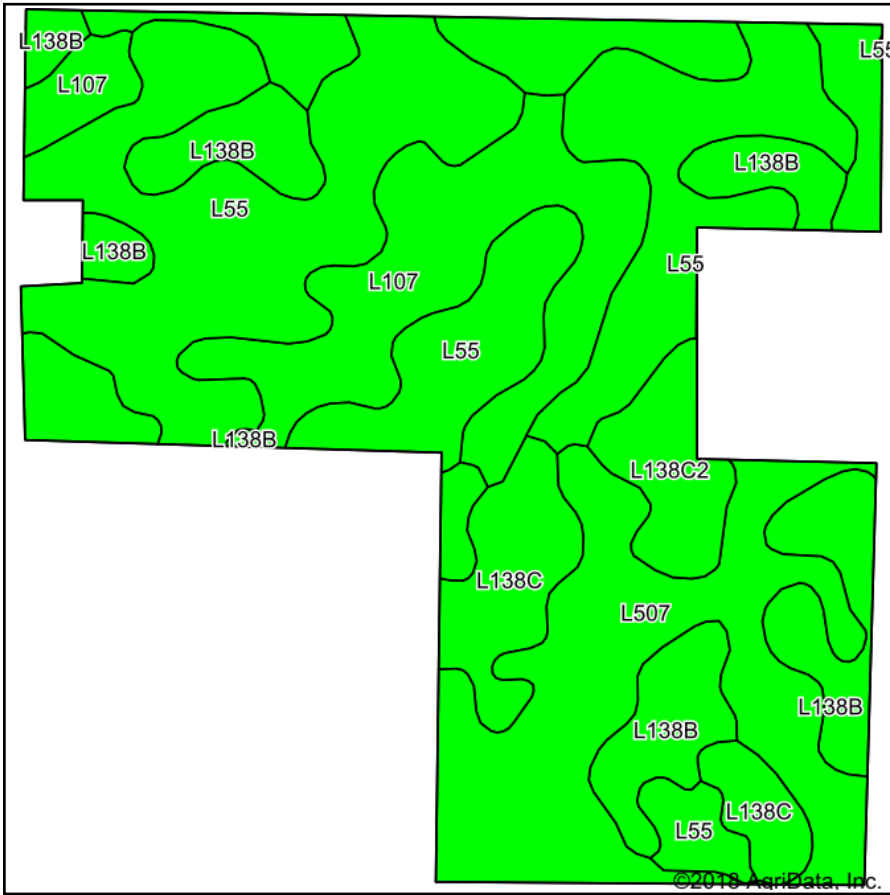


# Soils Map



State: **Iowa**  
 County: **Boone**  
 Location: **26-82N-28W**  
 Township: **Union**  
 Acres: **110**  
 Date: **8/13/2018**

Maps Provided By:



## Area Symbol: IA015, Soil Area Version: 24

Code	Soil Description	Acres	Percent of field	CSR2 Legend	Non-Irr Class *c	*i Corn	*i Soybeans	CSR2**	NCCPI Soybeans
L55	Nicollet loam, 1 to 3 percent slopes	38.80	35.3%		le	0	0	91	83
L507	Canisteo clay loam, Bemis moraine, 0 to 2 percent slopes	28.07	25.5%		llw	0	0	87	78
L107	Webster clay loam, Bemis moraine, 0 to 2 percent slopes	17.59	16.0%		llw	0	0	88	80
L138B	Clarion loam, Bemis moraine, 2 to 6 percent slopes	14.52	13.2%		lle	220.8	64	88	78
L138C	Clarion loam, Bemis moraine, 6 to 10 percent slopes	7.00	6.4%		llle	0	0	84	75
L138C2	Clarion loam, Bemis moraine, 6 to 10 percent slopes, moderately eroded	4.02	3.7%		llle	0	0	83	59
<b>Weighted Average</b>						<b>29.1</b>	<b>8.4</b>	<b>88.4</b>	<b>79.2</b>

\*\*IA has updated the CSR values for each county to CSR2.

\*i Yield data provided by the ISPAID Database version 8.1.1 developed by IA State University.

\*c: Using Capabilities Class Dominant Condition Aggregation Method

Soils data provided by USDA and NRCS.